

PAPER • OPEN ACCESS

Transport in thematic interior design concepts as an effective principle of career guidance

To cite this article: Anna Koval-Tsepova and Olena Oliynyk 2020 *IOP Conf. Ser.: Mater. Sci. Eng.* **918** 012177

View the [article online](#) for updates and enhancements.

You may also like

- [Program Evaluation Coaching on Abandoned Children Who Drop Out of School in PPSBR Makkareso in Maros](#)
Andy Pratama HR, Iwan Setiawan HR and Ruslan
- [Life Skills Education for Children with Special Needs in order to Facilitate Vocational Skills](#)
Hendra Jaya, Sapto Haryoko, Saharuddin et al.
- [Recognition of valence using QRS complex in children with Autism Spectrum Disorder \(ASD\)](#)
B Anandhi and S Jerritta



The Electrochemical Society
Advancing solid state & electrochemical science & technology

241st ECS Meeting

May 29 – June 2, 2022 Vancouver • BC • Canada

Abstract submission deadline: Dec 3, 2021

Connect. Engage. Champion. Empower. Accelerate.
We move science forward



Submit your abstract



Transport in thematic interior design concepts as an effective principle of career guidance

Anna Koval-Tsepova¹, and Olena Oliynyk²

¹Borys Grinchenko Kyiv University, 18/2, Bulvarno-Kudryavska str., 04053, Kyiv, Ukraine

²National Aviation University, 1, Komarova ave., 03680, Kyiv, Ukraine

E-mail: annamysteria@gmail.com

Abstract. This article presented article the basic directions of transport theme use in interior design of specialized institutions for children who require social rehabilitation in Ukraine in the XXI century are considered. This themes are characteristic for playing-based theory of culture. There are a number of shortcomings in the environment of these institutions that prevent a positive impact on the psychological state of the child. Interior designers continue to search for new conceptual projects that improve the emotional state of children. An important interior design principle of social protection institutions is the principle of children career guidance. The transport theme is included in the main list of this design principle topics. Its use in the interior design of specialized institutions for children who require social rehabilitation is one of the important concepts today. A large number of children interiors thematic storylines are built with the use of this theme. Its main components are often air, land and sea transport. This theme is used in their works by a large number of modern interior designers and theoretical specialists as well.

1. Introduction

The transport theme and symbols are relevant in the interiors for young and older children group. The article analyzes the experience of using transport theme for career guidance of children and graduates of specialized institutions. The transport theme is part of the game theory of culture, which has earned an active development in design. On the beginning of the XXth century, the “play-based principle” in culture are expanded. The main representatives of this theory were M. Heidegger, O. Spengler, E. Fink, J. Ortega y Gasset, J. Huizinga, H. Gadamer, A. Gurevich i M. Kagan. "Homo Ludens" work (by Johan Huizinga) can be considered as the foundation of this concept, where attention is focused on a game element that includes every type of human activity[6]. This issue was an integral part of the study and was solved in other aspects, mainly psychologist.

Extraordinary works are created thanks to the architects and designers original ideas, who used the game principle in design. For example, the game element of interior design is presented in modern designer's works: K. Rashid, P. Stark, J. Morrison, J. Artfield, S. Bergne, M. Newson, T. Sally, R. Arad.

Barsukova, N. I. and Zherdev, E. V. deals with the theory and practice problems in the design culture and metaphor in design[1,11]. Bondarchuk, Yu. S. explored the principles of the children's game environment design in the dissertation[2]. Karavatska, N. O. dealt with aesthetic regularities of a game method in modern design[4].



2. Article purposes

To synthesize the experience of of transport theme use in interior design of specialized institutions for children who require social rehabilitation in Ukraine. To analyze typological features of Transport in thematic design concepts. To consider the main features of using transport theme for career guidance of children and graduates of these institutions.

3. The main part

The principle of career guidance in interior design is considered as an effective and efficient way of further employment and professional activity of graduates and pupils of social protection institutions for children. The relevance of the research topic is determined by the fact, that the problem of mental development of children in need of social adaptation is important for Ukraine in recent years. The interior of specialized institutions for children who require social rehabilitation is one of the effective methods of psychological rehabilitation. According to the National Strategy for Reforming the Systems of Institutional Care and Parenting for 2017-2026, radical changes will affect the functioning of all the main types of institutions for social protection of children, which, for various reasons, were left without parental care[12].

Due to the use of the career guidance principle, an important cognitive process of children and adolescents is provided. It compensates for the gender imbalance in the interior design of social protection institutions for children due to the overwhelming majority of female staff and the "female perception of interior design". Thus, the integration of "male heroic professions-images" in the cognitive environment of children is carried out. At the same time, the interior design is saturated exclusively with a "masculine image", the integral components of which, as for the transport theme, are the dynamics, movement and strength[5].

Let's focus on the use of career guidance in interior design of social protection institutions for children. The topic of transport is one of the general career guidance topics. In turn, the general theme unites several types of transport that have become widespread in interior design.

Let's dwell on them in more detail:

- air transport (represented in the interior design by images of an airplane, helicopter or space transport);
- land transport (represented in the interior design by images of different types cars and images of public transport);
- sea transport (images of a boat, yacht and steamer).

The leading images-concepts in this subject will be the: car image, image of the aircraft and image of a seagoing vessel. On the basis of annual leading exhibitions in the field of furniture industry and interior design, which took place in the main expo centers of Ukraine, it is possible to trace the preferences and demand of domestic citizens.

It should be noted that in the Ukrainian design of children's interiors the most widespread images are the images of road and sea transport (Figure 1, 2). Slightly less popular, among furniture manufacturers, is the aerospace theme, due the more complex image for styling.

An example of transport themes active use in the interior of social protection institutions for children is the "City of Happy Children" in Kyiv (Figure 1). The theme of cars and bicycles in the interior design of the boys' bedroom was used. Panels with elements of car racing and cars were placed next to the beds of pupils. Specific for this panel was the use of the assemblages. Some details (car wheels and car silhouettes) were three-dimensional. At the same time, in this interior the bicycle image for the lighting stylization in the room was used. The relative stylistics inconsistency of lighting fixtures and panels was compensated by the relevance of the theme and the positive perception of these images by children. Note that bicycle transport is belongs to land transport and this theme in design is becoming increasingly popular.

The relevance of the career guidance aspect in institutions of children social protection, with an emphasis on bicycles, confirms by the presence of workshops that successfully operate. As an example, in the SOS children's town in Italy, there is an active bicycle workshop, which helps children to get the

first skills in the bicycles design. The logical continuation of this career guidance technique would be to use the bicycle image in the interior design of children social protection institutions.



Figure 1. The theme of land transport (cars and bicycles) in the interior design of social protection institutions for children is the "City of Happy Children" in Kyiv.



Figure 2. The theme of sea transport (images of a boat, yacht and steamer) in the interior design for children.



Figure 3. The theme of air transport (represented in the interior design by images of an airplane) in the interior design for children.

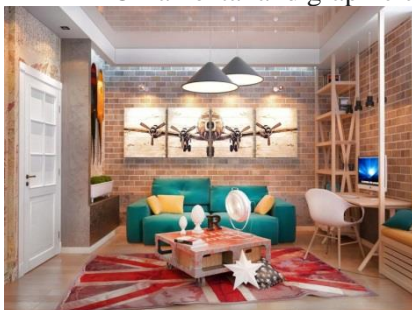
So, we can say, that today one of the important design techniques is the use of transport symbols in the means of graphic and subject design in the development of children institutions interiors. It should be noted that the transport theme and symbols are relevant for the interiors for young children. The peculiarity is that in the interiors for young children there is always exists an exclusively stylized and decorative transport theme in a rather concise form, which is accessible and understandable for this age of children [3]. For the interiors of the older children group, should be used close to reality transport topics and other elements of the subject environment in this direction, which provide career guidance function [7]. On the basis of separate examples of children's domestic and foreign design interiors it is possible to allocate the following means of transport symbolic:

- ornamental compositions (images of airplanes, helicopters, cars and steamers) in graphic decoration and textiles;
- monumental panels with transport themes elements;
- models of airplanes, cars, ships - as objects of design;
- furniture and partitions with use of transport subjects silhouettes[9];
- children's toys in the form of various types of transport (from wood or other ecological material).

Table 1. Examples of children's interiors with different design techniques in transport.



Ornamental and graphic compositions (images cars and motorcycle)



Monumental panels with transport themes elements



Models of airplanes, cars, - as objects of design



Furniture use of transport symbols



Children's toys in the form of various types of transport (from wood or other ecological material)

Now let's dwell in more detail on these techniques. The use of thematic graphic images on the walls of the interiors of social protection institutions for children is typical for different rooms. These can be different purpose rooms (rest rooms, study rooms). Decorative monumental panels should be used both in interiors (in large rooms) and in exteriors. In the above-mentioned institutions such premises include: dining rooms, game spaces (rooms) and recreational areas (Figure 3).

It should be noted the most optimal use of transport theme in the subject environment. The subject environment includes the following components: furniture, lighting, textiles, utensils. Models of airplanes, cars, ships and children's toys are also included in the subject environment. Transport themes are vividly represented in the furniture industry. Active use of this theme in furniture sets for children's bedrooms today provides the optimal choice, taking into account the important "price-quality" ratio. (Table 1).

Textiles in children's interiors are an important functional and decorative element. Incredible textile collections help to complete the conceptual solution in the interior. Huge opportunities open up for decorators and designers thanks to the many interesting offers of the furniture and textile industry. Special mention should be made for transport themes as a way of visual perception of communicative design. This property is used in the children educational practice.

Thus, for the practical use of transport theme in the interiors of social protection institutions for children, the following principles should be considered:

- The order principle (all children's things in clearly designated places)
- The principle of decorative elements coherence in the interior
- The quality and safety principle
- The variability principle (usage of several planned decorations)
- The universality principle (provided by replacing the main purpose)

One of the new interior design trend is the use of design techniques aimed at strengthening career guidance among children at specialized institutions for children who require social rehabilitation. For older children in these institutions, the concept of interior design should be aimed at a certain career guidance using production topics. It is necessary to orient children to professions that have a certain

image of "heroization", such as pilots, sailors, firefighters. This forms the basis for creating a positive image of certain professions that distract the child from the negative consequences of his past[7].

4. Conclusions

Peculiarities of the use of this theme in the interior of specialized institutions for children who require social rehabilitation will be the concise and symbolic form of decorative elements. To ensure stylistic unity in interior design, the combination of transport themes with other design techniques should be considered. Taking into account the coloristic and compositional features of the decorative elements of the interior design of specialized institutions for children who require social rehabilitation is an important component of a harmonious children's environment.

It is advisable to use typological varieties of transport themes, such as:

- air transport (images of an airplane, helicopter, spacecraft)
- land transport (images of different types cars etc.)
- sea transport (images of a boat, yacht or steamer).

The peculiarities of the use of transport themes in the context of the career guidance principle in the interior design of specialized institutions for children who require social rehabilitation was analyzed. It is emphasized that the career guidance principle is an effective way of further employment and professional activity of graduates and pupils of these institutions.

Taking into account the practical experience of domestic and foreign experience in the field of children's interior design, it is possible to identify the following practices of transport themes usage:

- graphic and ornamental compositions in the decoration of interior enclosing surfaces and textile;
- monumental panels with transport themes elements;
- models of airplanes, cars, ships - as objects of design;
- lighting fixtures and other functional and decorative design elements;
- furniture and partitions with use of transport subjects silhouettes;
- children's toys in the form of various types of transport, stored on open shelves (act as both toys and design objects).

In this article the peculiarities of the transport themes usage on the example of the institution of social protection of children "City of Happy Children" in Kiev was reviewed.

The peculiarities of using the interior design general practices in specialized institutions for children who require social rehabilitation, taking into account transport themes, was analyzed.

5. Research perspectives

The factual and analytical materials, illustrative material in this article and examples of projects transport themes can be useful in the interior design or during the restoration specialized institutions for children who require social rehabilitation in Ukraine.

Acknowledgements

The Authors, published by EDP Sciences. This is an open access article distributed under the terms of the Creative Commons Attribution License 4.0 (<http://creativecommons.org/licenses/by/4.0/>).

References

- [1] Barsukova N I 2008 *Design of the environment in the design culture of postmodernism of the end of XX – the beginnings of the XXI centuries, Thesis abstract for Doc. Sc.* (Moscow: All Russian Research Institute of Technical Aesthetics) p 48
- [2] Bondarchuk Yu S 2016 *The principles of the children's game environment design in public appointment institutions, The dissertation of the candidate of arts* (Kharkiv: Kharkiv State Academy of Design and Arts) p 310
- [3] Gaykazova R T and Kostrikina T D 1974 *Decoration of preschool institutions. Meaning of the architectural and spatial environment in education of preschool children* (Moscow, Prosveshchenie)

- [4] Karavatska N O 2009 *Actual philosophy and cultorial problems of the present: Scientific collected works* **23** 214
- [5] Khaliullina O R 2011 *Gender factor in design of the subject environment, Thesis abstract for Cand. Sc.* (Moscow: All Russian Research Institute of Technical Aesthetics) p 23
- [6] Kheyzinga Y 1997 *Homo Ludens: articles on cultural history* (Moscow: Progress-Traditsiya)
- [7] Koval-Tsepova A V Kuljtura I 2012 *Suchasnistj: aljmanakh 2* (K.: Milenium) p 224
- [8] Koval-Tsepova A V 2018 *Naukovi zapysky Ternopiljsjkogho nacionaljnogho pedagoghichnogho universytetu imeni Volodymyra Ghnatjuka. Serija: Mystectvoznavstvo 1(38)* (Ternopilj: Vyd-voTNPUIim.V.Ghnatjuka) p 262
- [9] Olijnyk O, Koval-Tsepova A 2010 *Suchasni problemy arkhitektury ta mistobuduvannja: Nauk.-tekhn. Zbirnyk 24* (Kyjiv: KNUBA) p 82
- [10] Oliyanyk O, Zelenkova V 2015 *Proceedings of the 18th Conference for Junior Researchers 'Science – Future of Lithuania' TRANSPORT ENGINEERING AND MANAGEMENT* (Vilnius, Lithuania)
- [11] Zherdev E V 2002 *Metaphor in design: theory and practice, The dissertation of the doctor of arts* (Moscow: All Russian Research Institute of Technical Aesthetics) p 253
- [12] *National Strategy for Reforming the Systems of Institutional Care and Parenting for 2017-2026*
<https://zakon.rada.gov.ua/laws/show/703-2020-%D1%80#Texta/laws/show/703-2020-%D1%80#Text>